

APPLICATION: 3 Axle 2S2M SIDE BY SIDE BENDIX TABS 6

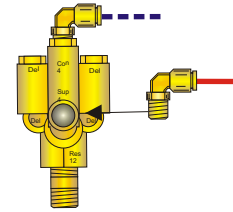
PART #: **PAK2S2MS-3-B1**

- CONTENTS: Glad hand assemblies  
 Air tank with installed drain valve and plugged unused ports  
 Air tank mounting kit with pads, bolts, washers and lock nuts  
 Brake valve(s) are installed and include push to connect fittings  
 Hoses with swivel hose ends are installed to valve(s)  
 Two speed sensors, sensor bushings and sensor extensions  
 Hose separators and sensor cable retainers

OPTIONAL SYSTEMS

**PAK2S2MS-3-B2**

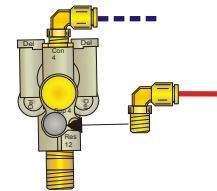
TRAMEC SPRING BRAKE VALVE



DA4204 (TEV) SB PRIORITY

**PAK2S2MS-3-B3**

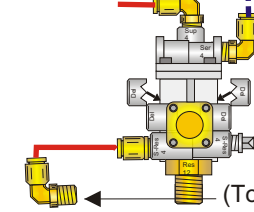
TRAMEC SPRING BRAKE VALVE



DA4204A (STEV) RES PRIORITY

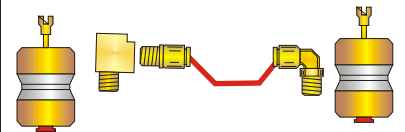
**PAK2S2MS-3-B6**

BENDIX SPRING BRAKE VALVE



DA4203 (SR-5) SB PRIORITY

SUPPLIED WITH TWO SPRING BRAKE CROSSOVER KITS

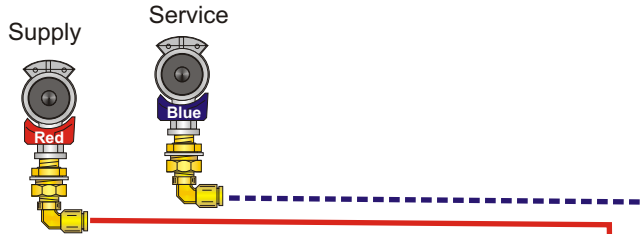
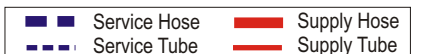


**SPECIFY HOSE LENGTH IN INCHES**  
**EMERGENCY:**

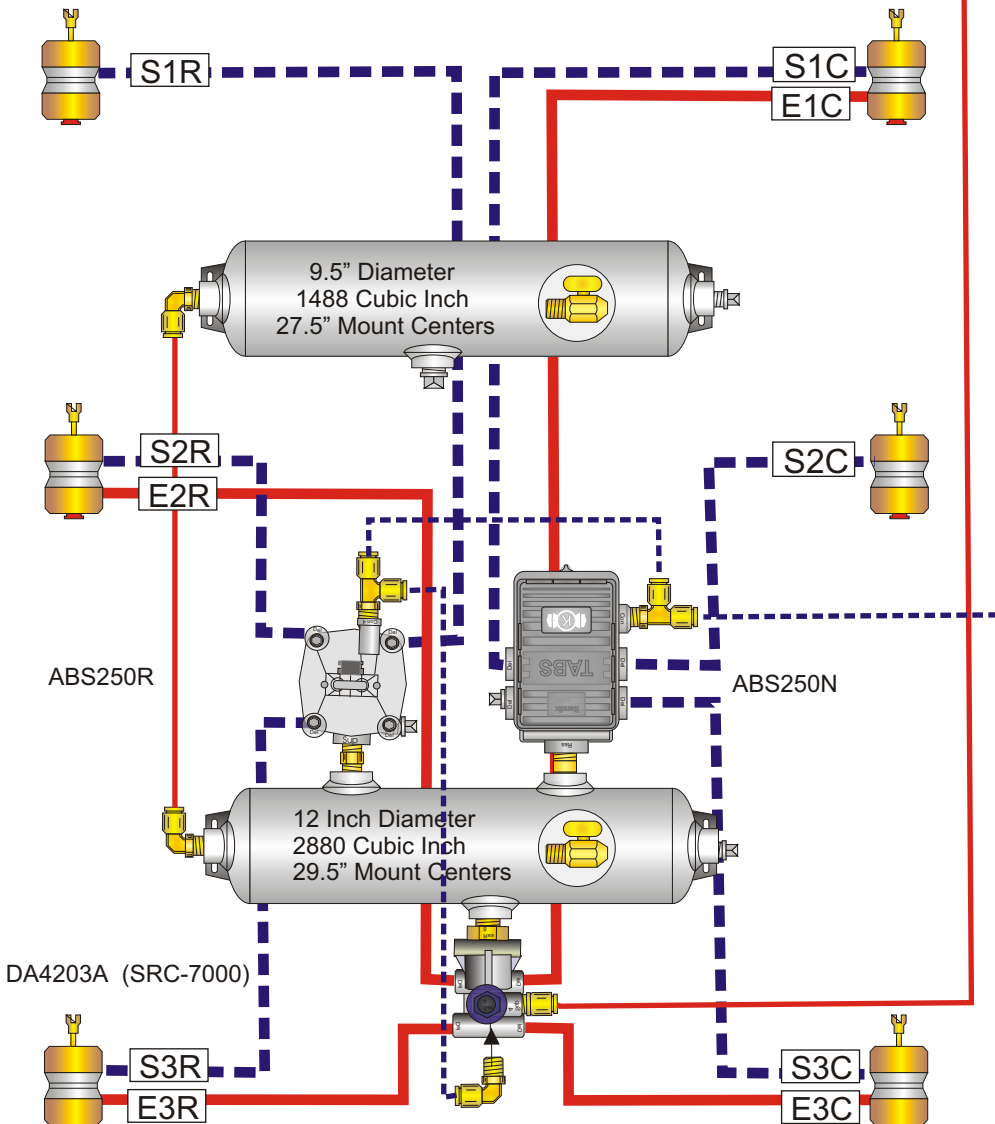
E1R	E1C
E2R	E2C
E3R	E3C

**SERVICE:**

S1R	S1C
S2R	S2C
S3R	S3C
S4R	S4C



SPECIFY YOUR HOSE LENGTHS BELOW



**Specifications:**

Hoses meet J1402 & JT106 specifications and are 3/8 ID unless otherwise noted. Reservoirs meet J10B specifications  
 Pipe fittings are brass or plated SH80 steel. Push-in style 3/8 tube fittings standard. ABS Electronics pre-tested before shipment.